



BOT Agenda Item 7b

Oregon State University

Cascades

# OSU-Cascades Overview and Update

OSU Board of Trustees

May 17, 2024

**A 40-year  
community  
effort to bring a  
four-year  
university to  
serve Central  
Oregon**



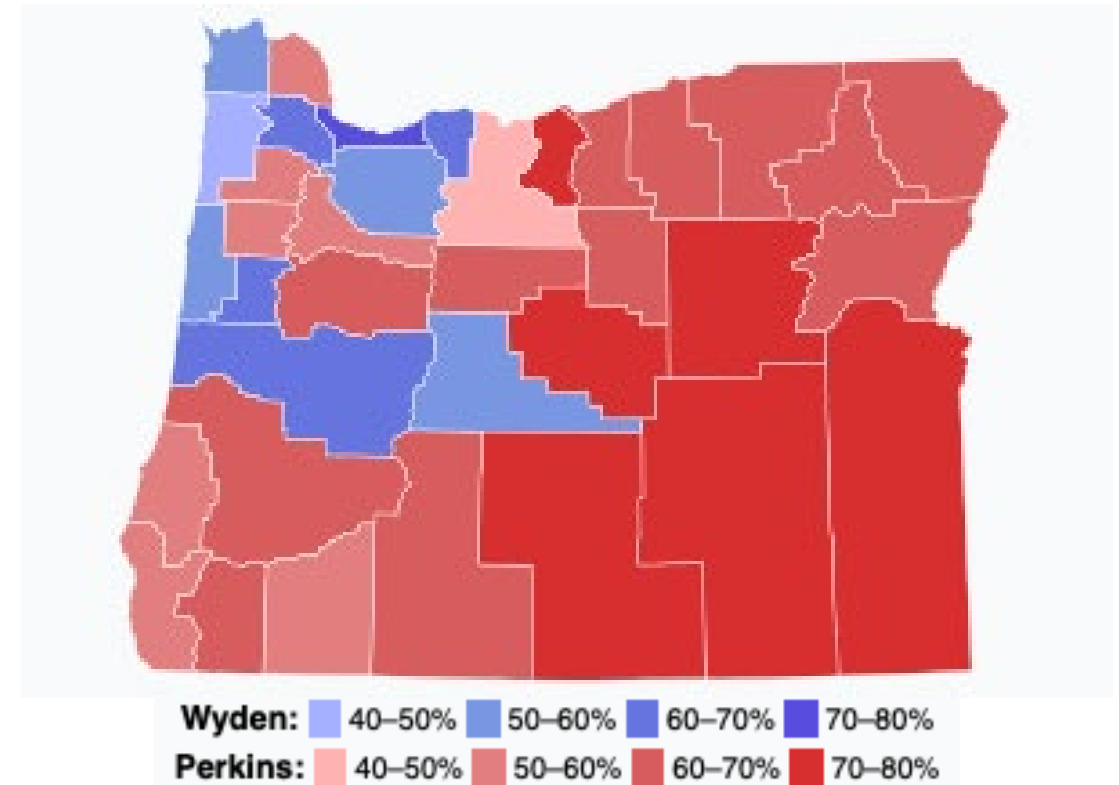
# A key region for Oregon's land grant university

- Fastest growing part of the state
- Politically and economically diverse
- A center of innovation and entrepreneurship

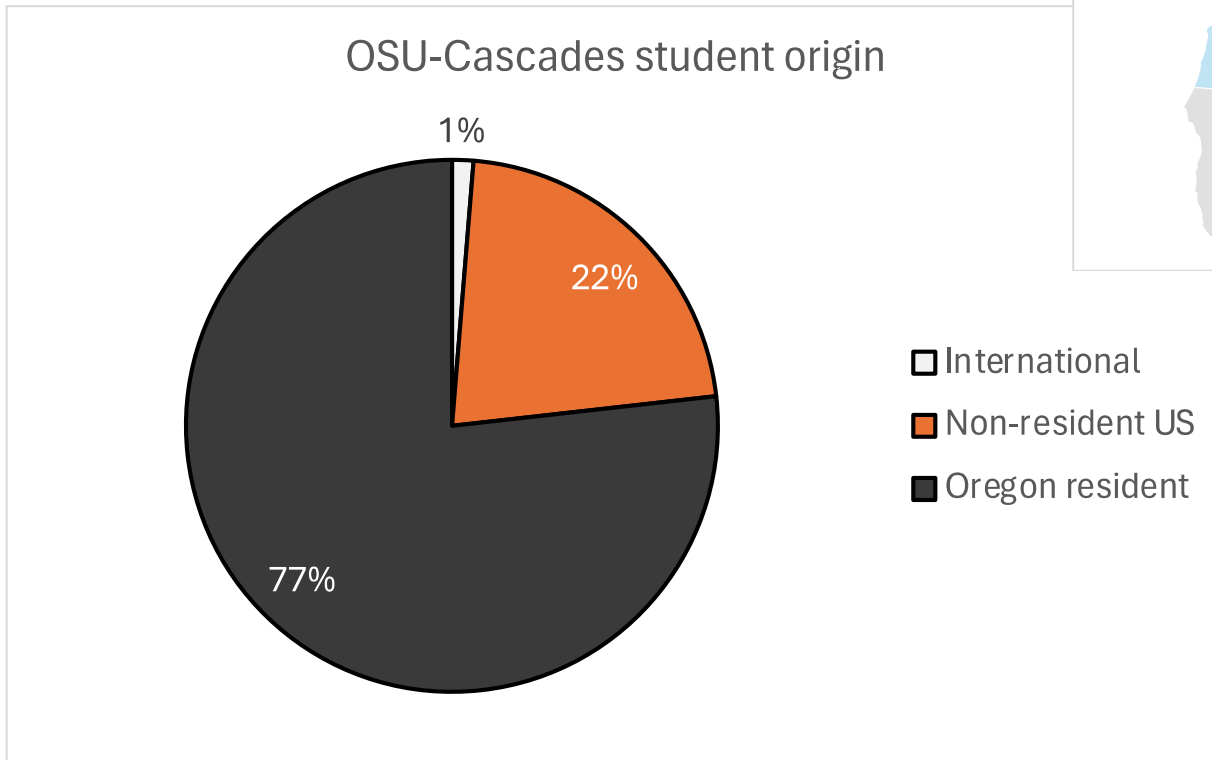
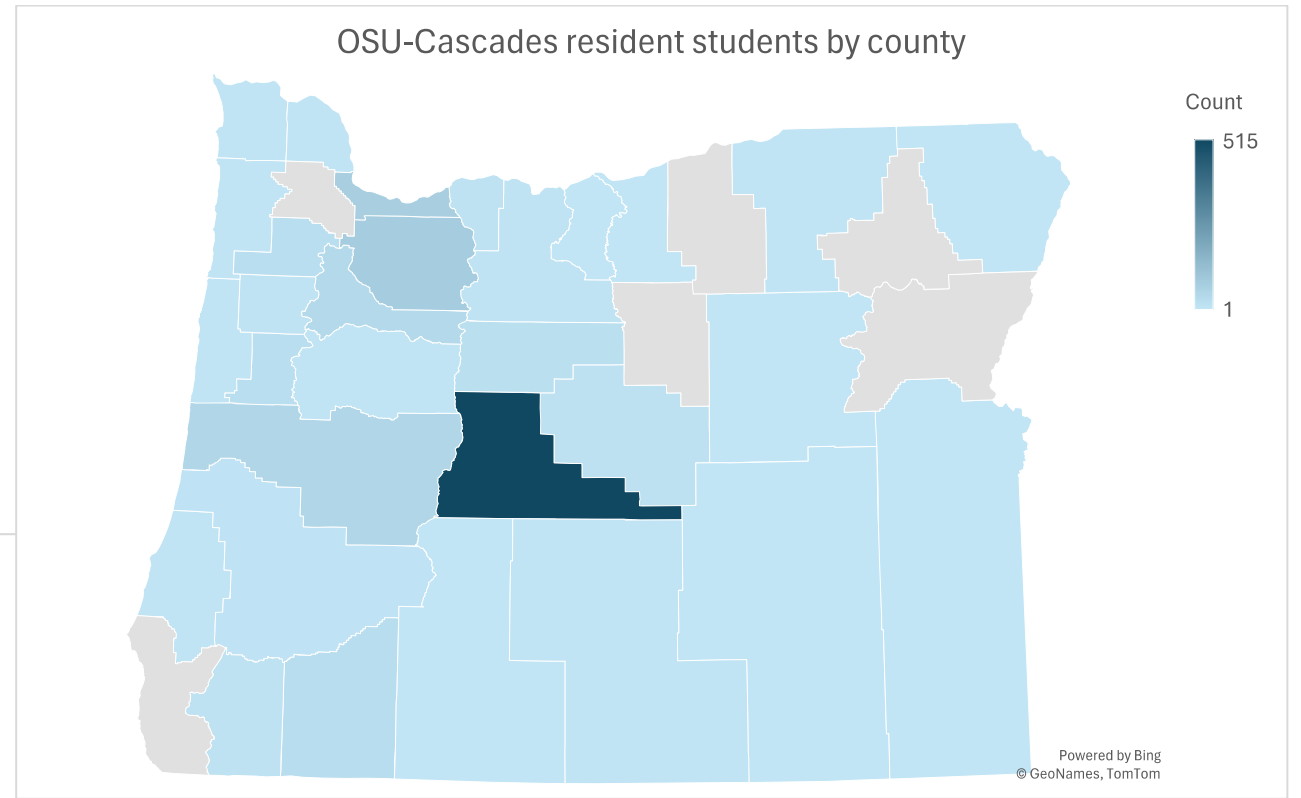
POPULATION CHANGES FOR CENTRAL OREGON		
Area	Percent Change 2010 - 2021	Net Migration % 2010 - 2021
Oregon	11.4%	85.2%
Counties		
Deschutes County	28.9%	89.0%
Crook County	21.5%	81.1%
Jefferson County	14.6%	63.7%

Source: [Population Research Center, PSU 2021](#). [Oregon Employment Department, 2021](#).

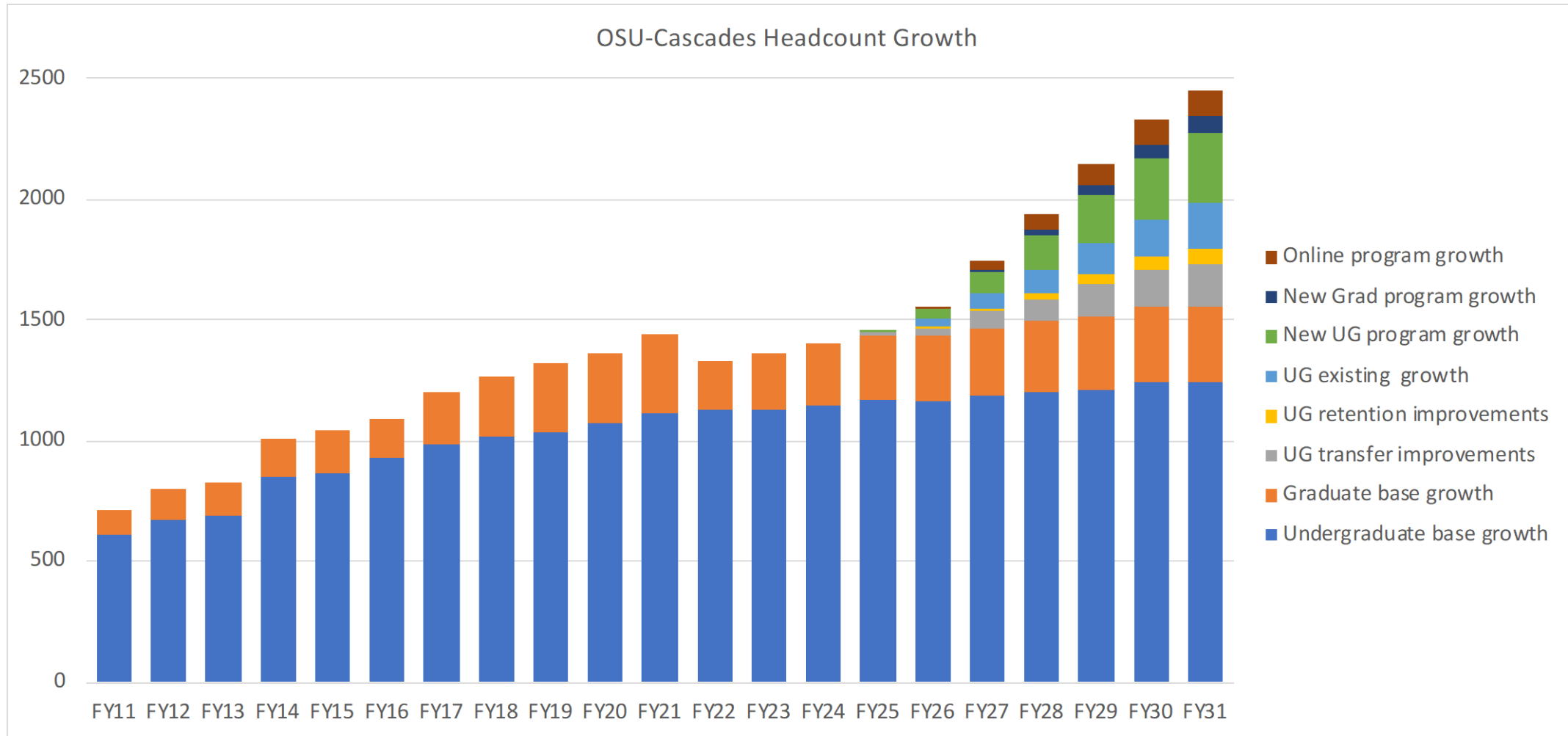
<https://en.wikipedia.org>



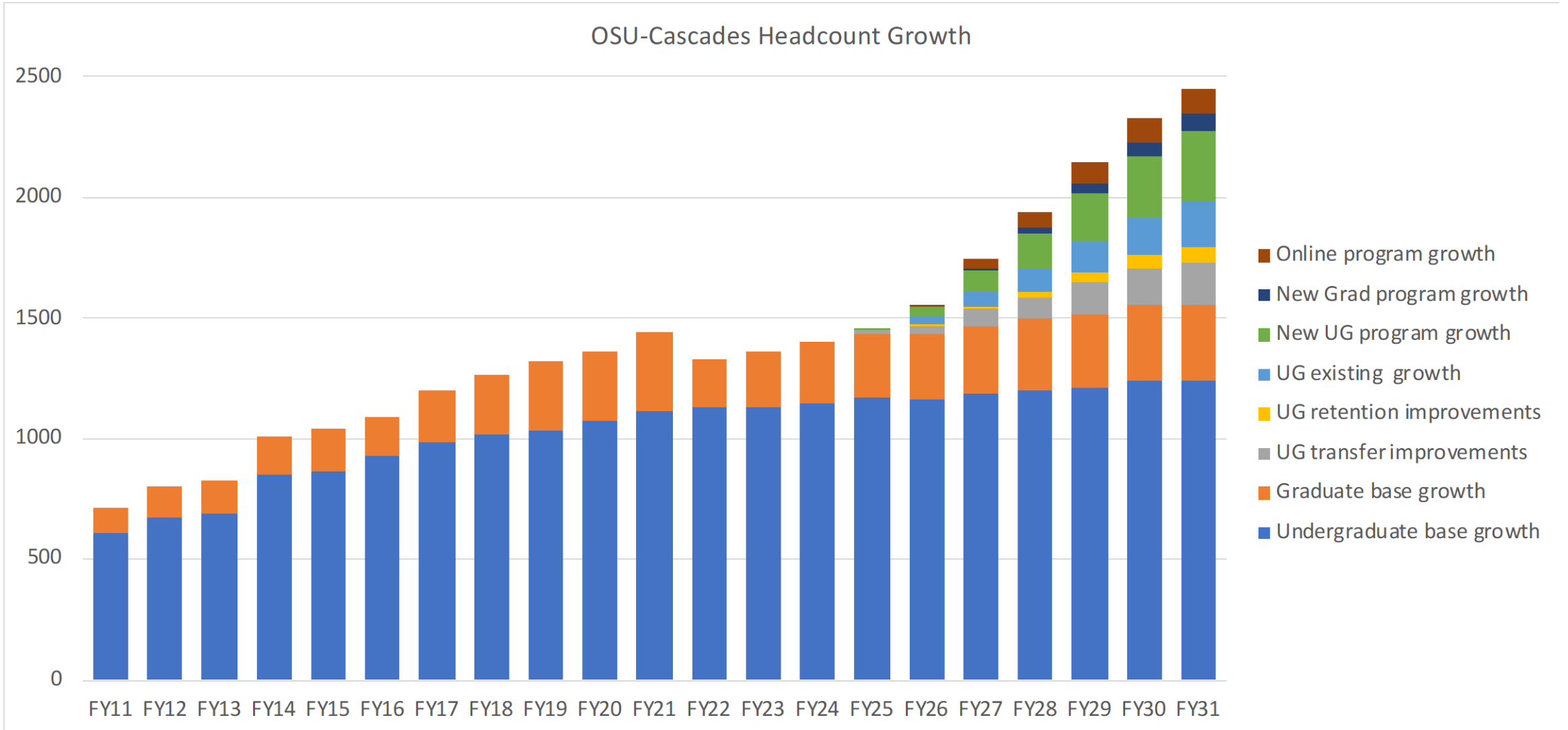
# Students and academic programs



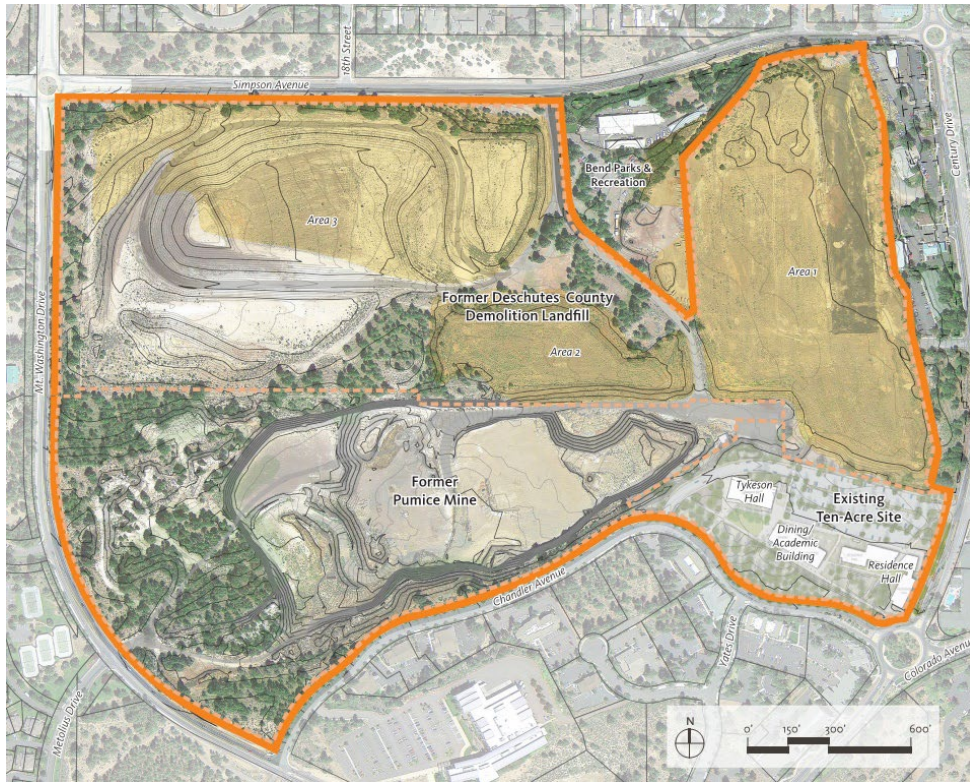
# Enrollment growth history and projections



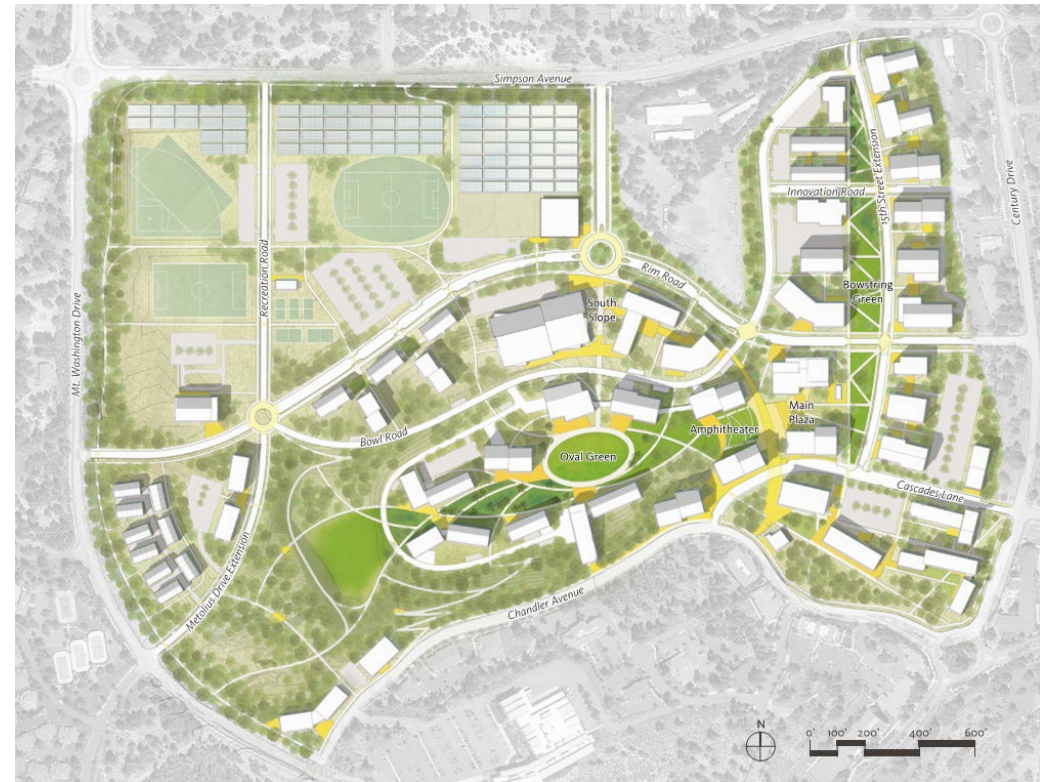
# Strategies for serving 2,200 students by the fall of 2030



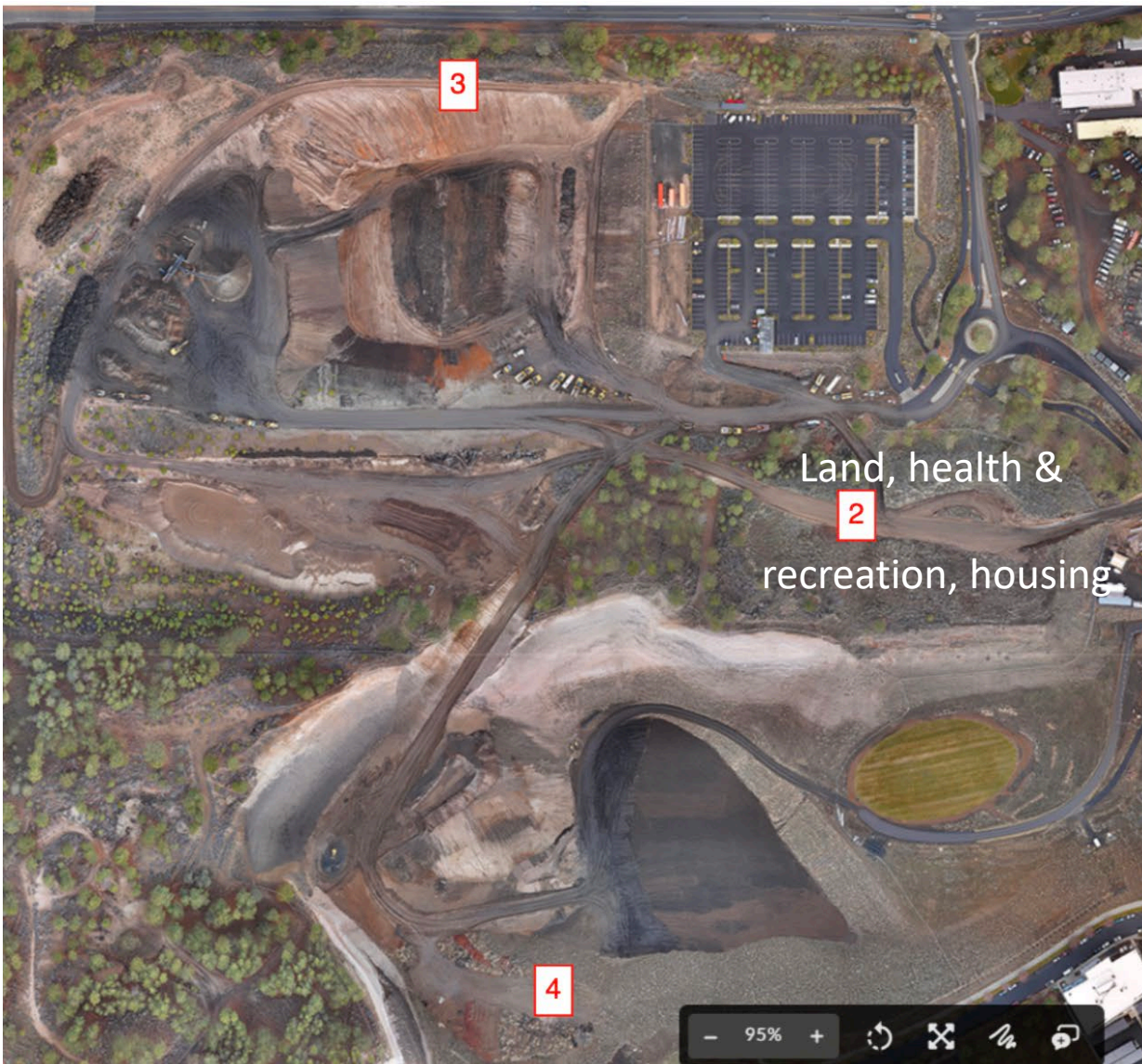
# A development plan in collaboration with the region



From brownfield site...

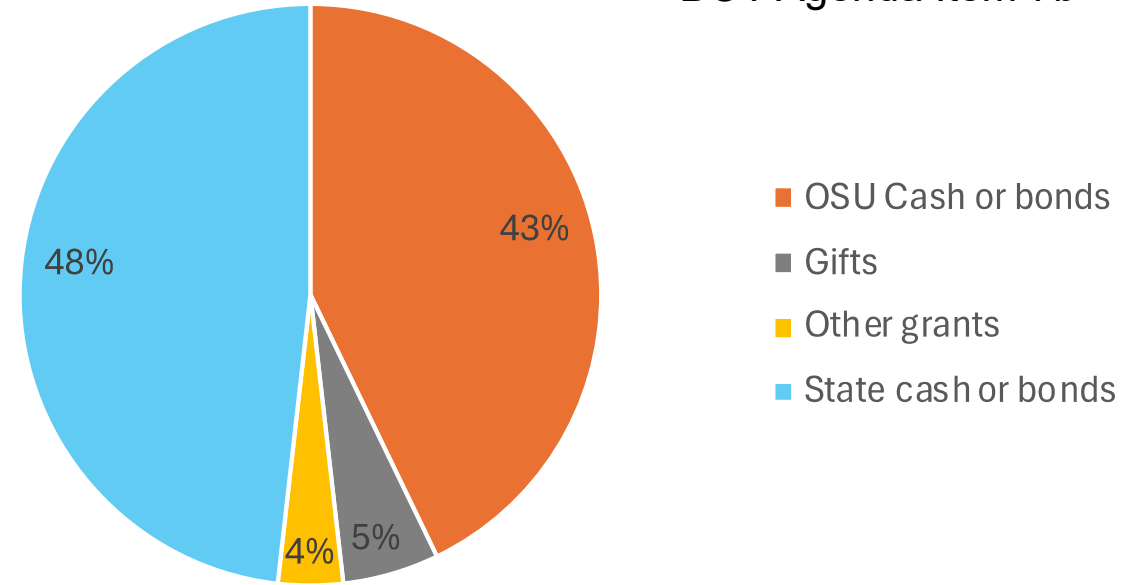


...to productive community asset.



## Funding Sources for OSU-Cascades Development

BOT Agenda Item 7b



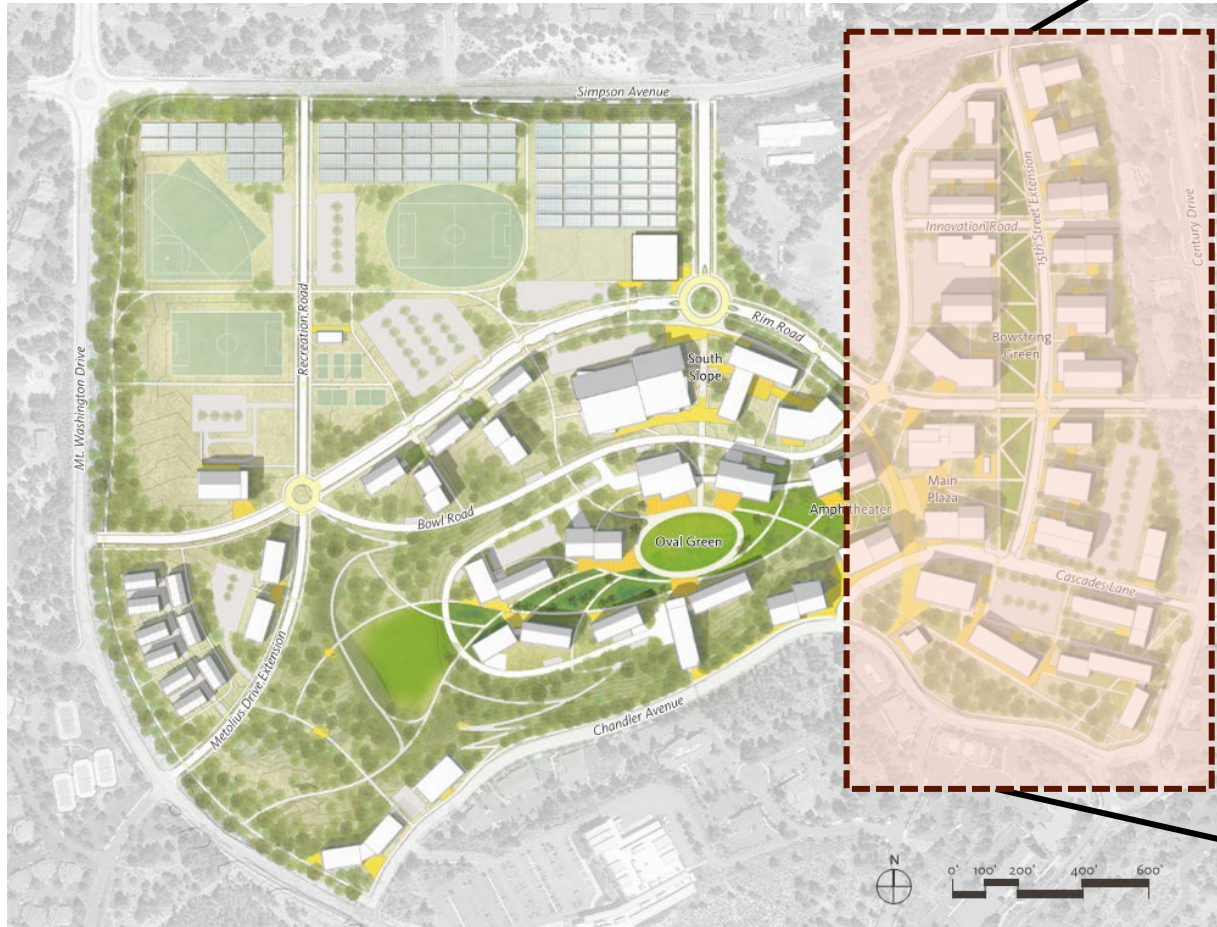
**How are we building the campus?**



# Engagement with and research for Central Oregon



# An Innovation District to bring industry, entrepreneurship, students, and faculty together on campus



# A 40-year community effort to bring a four-year university to serve Central Oregon



Innovation District Phase 1

**Questions?**



Student Success Center