

Mission and Impact

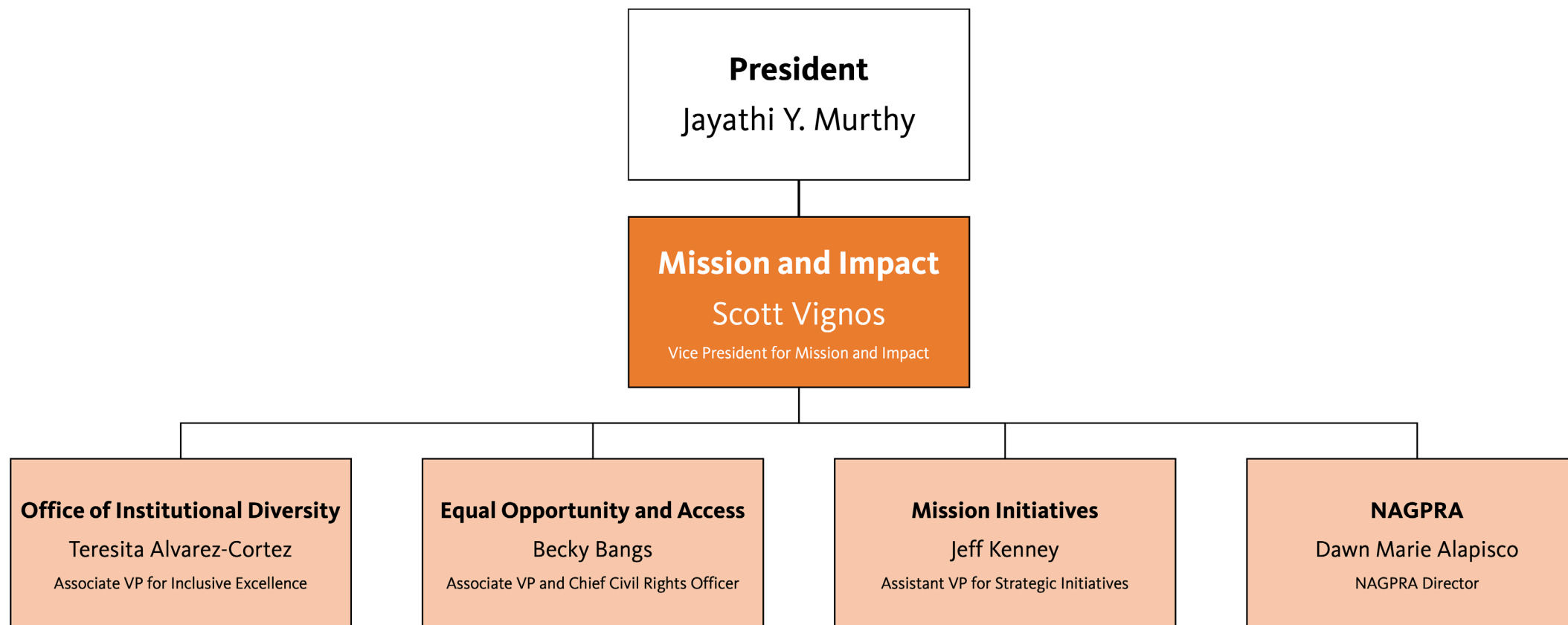
ADVANCING MISSION & IMPACT
ANNUAL REPORT TO THE BOARD OF TRUSTEES

October 23, 2025



Oregon State
University

Mission and Impact Portfolio



Mission and Impact Portfolio

Mission and Impact units lead and support initiatives that:

- Advance complex, cross-domain university-wide priorities established in *Prosperity Widely Shared* and the Diversity Action Plan.
- Generate and integrate data insights and facilitate dialogue to enable strategic leadership decision making.
- Build organizational capacity through employee development, leadership development and robust assessment.
- Foster external partnerships that deepen trust and engagement across diverse communities served by the university.
- Support compliance with civil rights laws and policies to advance the university's equal access mission.

University Engagement

- Office of Institutional Diversity: 410 internal engagements in 2025 (+15%)
- Equal Opportunity and Access: Critical training for 5741 employees (79.9%)
- Equity Leaders Consortium: 38 active members

External Engagement

- Office of Institutional Diversity: 150 external engagements (+25%)
- Access OSU: 15 events at OSU Portland Center; 800 Title I students visits; 5000+ learners engagement
- NAGPRA: Over 100 consultations with external partners

Highlighted Initiatives

- Educating on free expression and academic freedom
- Amplifying scholarly excellence
- Advancing inclusive excellence through the Administrative Modernization Program (AMP)

State of Inclusive Excellence at OSU

Eleven efforts were highlighted during this year's program, including:

- The Catalyst Scholars in the College of Engineering
- The OSU Extension Fire Program
- Finish in Four
- The Disability and Social Interaction Lab

Focus Areas for 2025-26

- Develop an OSU external engagement network
- Engage the PPLC to advance strategic enrollment management
- Engage unit leaders in workforce strategy development
- Continue navigating the changing higher education landscape
- Enhance the impact of Access OSU in the Portland region

Questions and Conversation