

# NEW ERA OF ENGINEERED PROTEINS DRIVING OSU BIOTECHNOLOGY

**RYAN MEHL**

Professor - Biochemistry and Biophysics

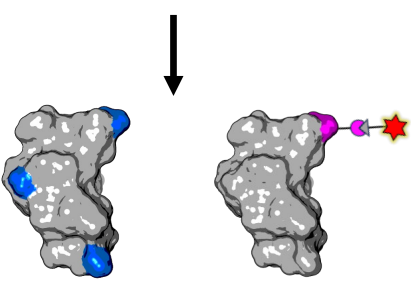
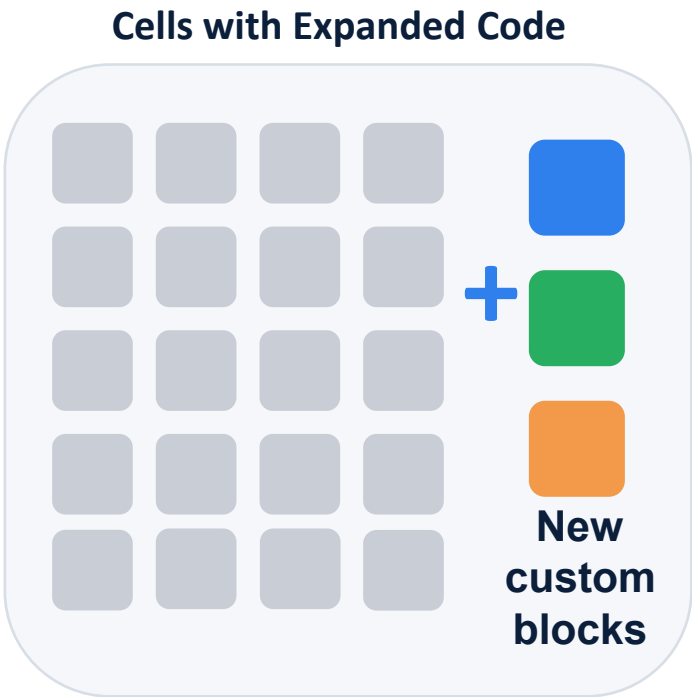
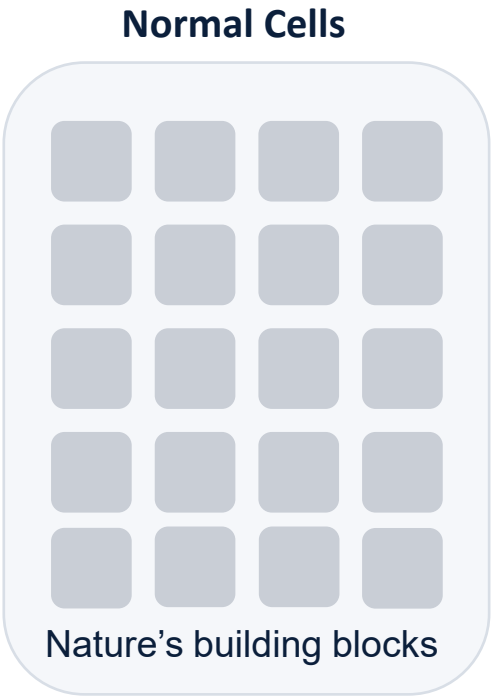
Director - GCE4ALL Center

Chief Scientist – Biotechnology Translational Inst.

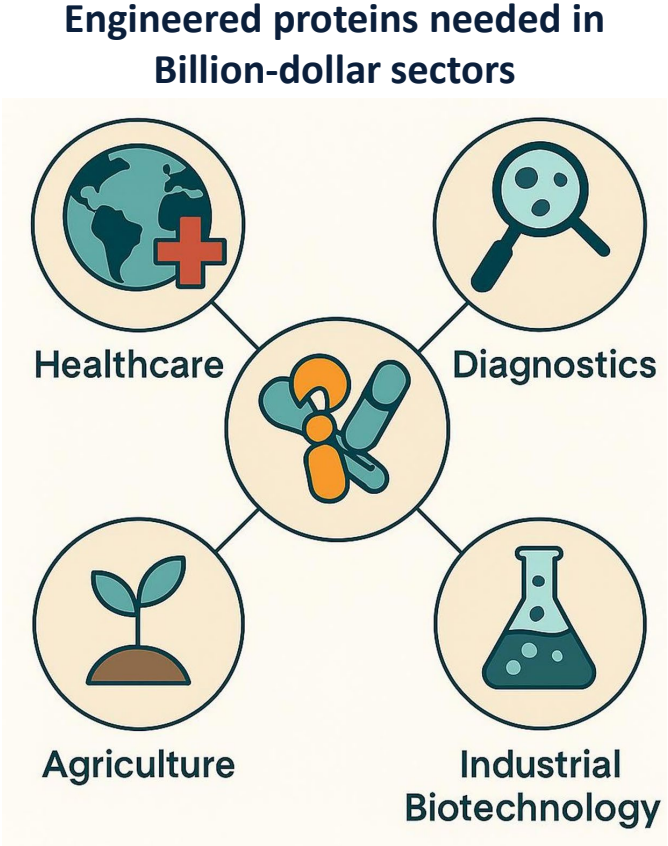


**Oregon State University**

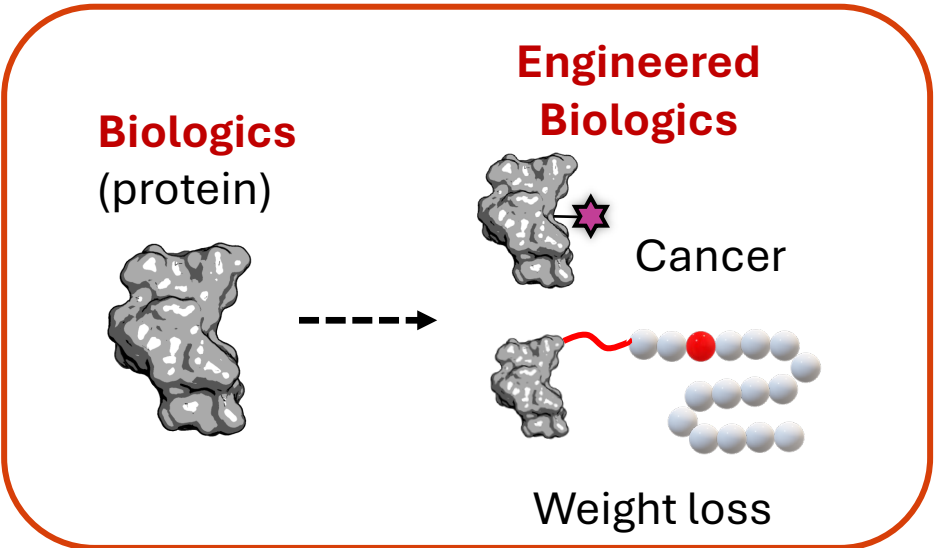
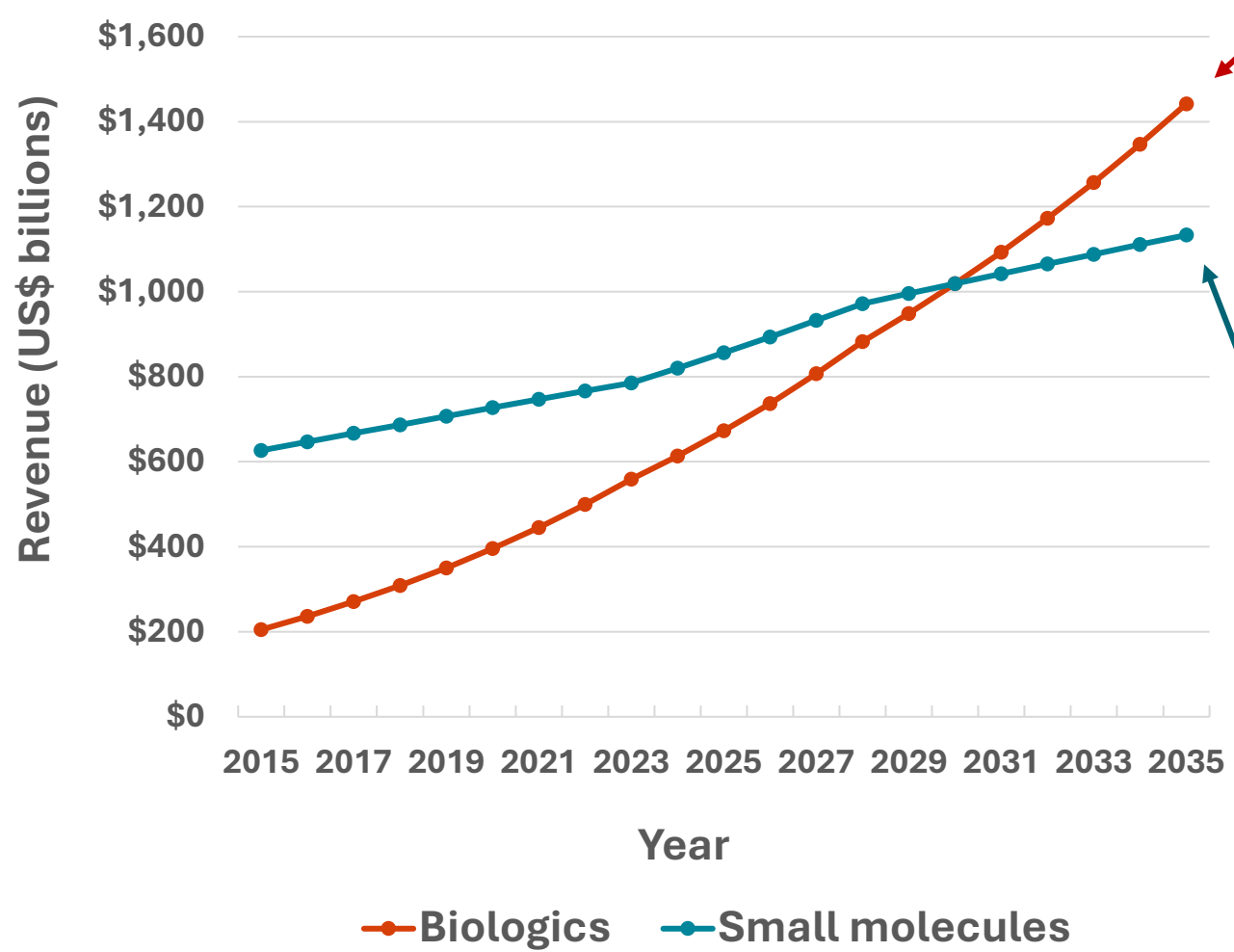
# Ryan Mehl Solves Protein Engineering Problem



**New chemistry engineered into proteins**



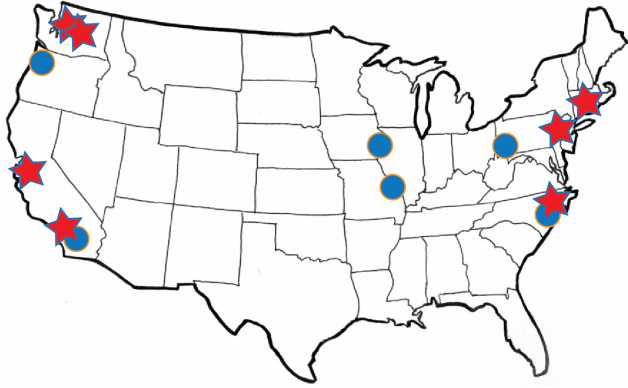
# Biologics Need Scalable Engineering Solutions



Accelerated by Engineered Proteins

Drugs (small molecule)

# GCE4All Open Door Approach



Bring us your  
**Problems**  
Bring us your  
**Needs**



**Widespread  
GCE-enabled  
Biomedical  
Advances**

# Evolution of the OSU GCE Ecosystem

