



**Oregon State**  
University

# Public Safety Update

Board of Trustees  
Executive & Audit Committee  
October 15, 2020



# Community Engagement

- Public Safety Advisory Committee (PSAC) receiving updates from other campus safety partners
  - ✓ Counseling and Psychological Services (CAPS)
  - ✓ Center for Fraternity and Sorority Life
  - ✓ University Housing and Dining
  - Survivor Advocacy Resource Center
  - Student Care Team
  - Human Services Resource Center
  - Student Conduct and Community Standards
- Assessment of needs ongoing
  - There is a clear need for after-hours holistic support for people in crisis beyond a public safety response.
- Community, Wellness Education & Safety Network initiative underway

# OSU Community Wellness, Education & Safety Network

## Strategy Elements

### Objectives

1. Improve OSU coordination and delivery of crisis prevention, response and support services.
2. Help ensure most appropriate response resources are engaged during crisis.

### Solution

**Community Wellness & Safety Network:** Network of university programs that coordinate prevention and intervention for students in crisis. Coordinates situational stabilization of crisis and provides crisis assessment, resource referral and advocacy.

# OSU Community Wellness, Education & Safety Network



## Community Partner Agencies

Benton County Health Services

Corvallis Police Department

Center Against Rape and Domestic Violence

# OSU Community Wellness, Education & Safety Network (Departments)

## Community Health and Crisis Response

Student Crisis Coordination Office

Student Care Office

Counseling & Psychological Services

Survivor Advocacy Resource Center

Human Services Resource Center

University Housing & Dining Services

Student Health Services Clinic

Office of Human Resources

## Safety and Security Services

Department of Public Safety

Environmental Health & Safety

## Community Relations, Education and Outreach

Dean of Students Office

Office of Institutional Diversity

University Housing & Dining Services

Student Conduct

Student Health Services Health Promotions

Department of Public Safety

Environmental Health & Safety

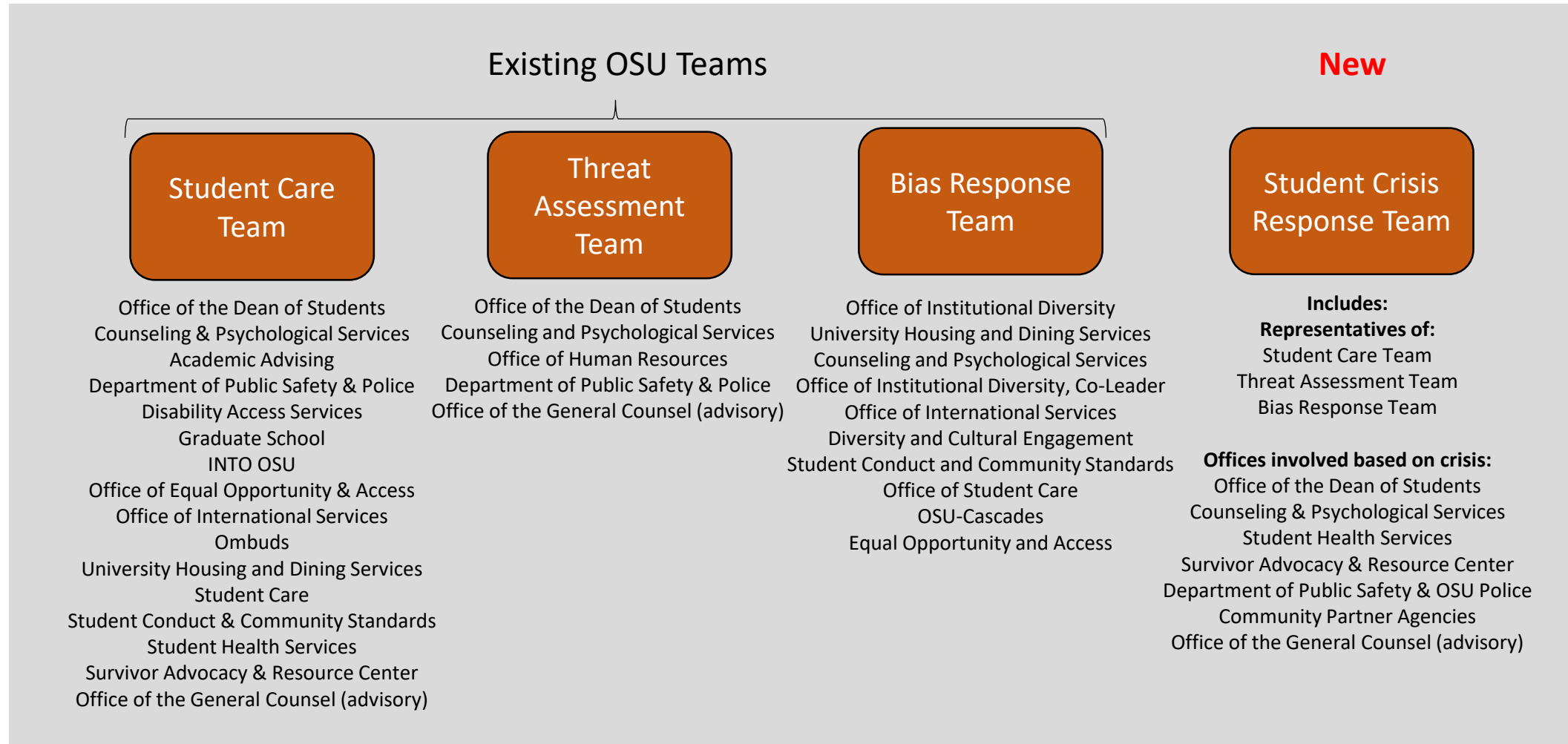
# OSU Community Wellness, Education & Safety Network

**Interconnected, but at times, independent**



# OSU Community Wellness, Education & Safety Network

## Response Teams



# OSU Community Wellness, Education & Safety Network

## Next Steps

- Consider feedback from Public Safety Advisory Committee engagement sessions and related recommendations from PSAC.
- Continue discussions on future collaboration with local agencies.
- Develop plan for funding and deploying recommended student crisis response investments.



# Staffing

## **Associate Vice President for Public Safety/Chief of Police**

- Applications under review by selection committee
- Target onboarding in November 2020

## **Operations Lieutenant**

- Recruitment under way

## **Sworn Officers**

- Recruitment remains open
- Sergeants
  - Advertising to fill five positions
  - Three conditional hires in process
- Patrol Officers
  - Advertising to fill for 12 positions.
  - Four conditional hires in process

# Questions?

<https://publicsafety.oregonstate.edu/>



**Oregon State**  
University